

# Sewage Treatment Plants

IMO MEPC 159(55) & MEPC 227(64)  
MED Type Approved

MEMBRANES



## Main Features & Advantages

- ⊗ Mitsubishi Rayon Membranes
- ⊗ Latest state of art technology on water filtration.
- ⊗ Membranes are a physical barrier to any solid or pollutant
- ⊗ Reliable technology and excellent quality of the effluent.
- ⊗ No chemicals required for disinfection stage

**DETEGASA**

Tel: +34-981494000

Fax: +34-981486352

www.detegasa.com

commercial@detegasa.com



OHSAS 18001

BUREAU VERITAS  
Certification



ISO 9001

BUREAU VERITAS  
Certification



**DETEGASA**

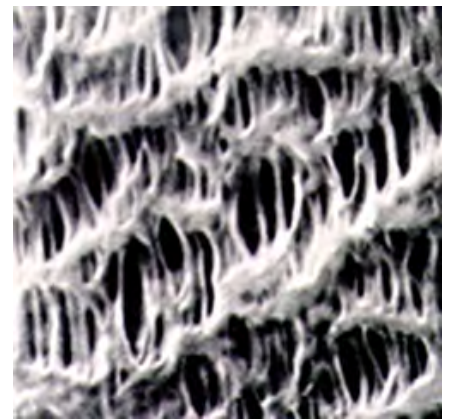
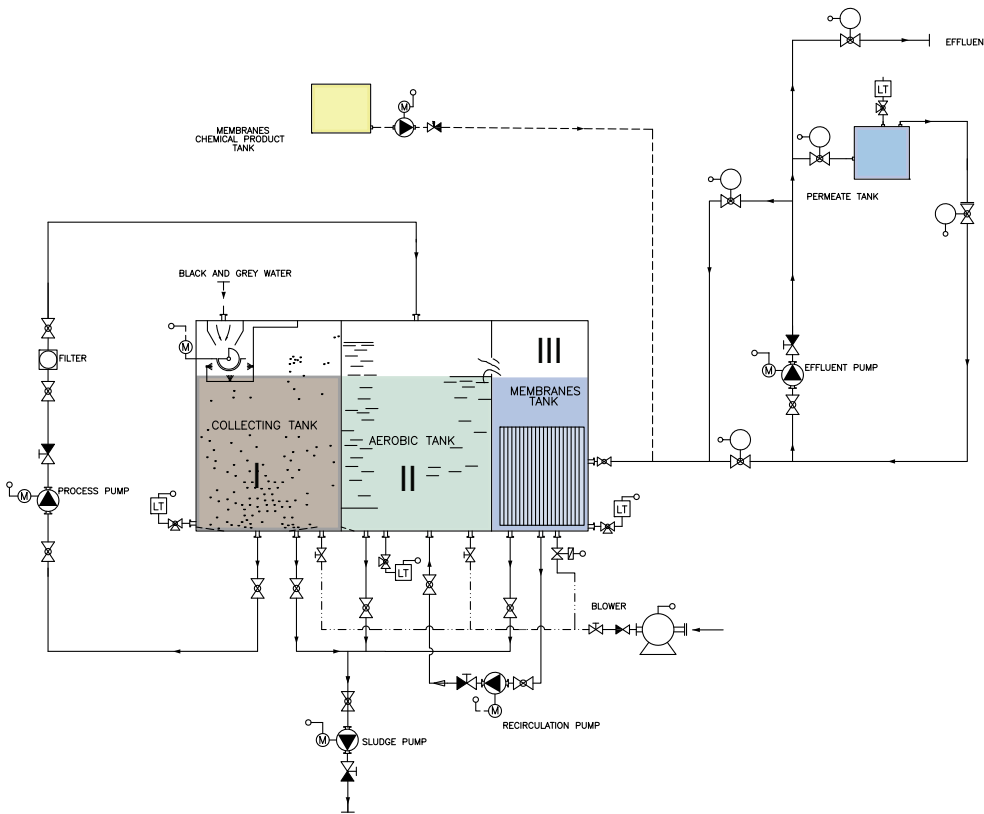
Carretera Castro-Meiras S/N

Tuimil-Sequeiro

Valdoviño-15550

Spain

# Membrane Bio-Reactor STP.



- Automatic backflushing.
- Submerged Membranes.
- Ideal for large crew vessels.
- Environmentally friendly technology.
- Fully customizable solutions.

Model	Hydraulic Load (Its/day)	Organic Load (kg BOD/Day)	Crew Members
PRM-21	2100	6	100
42	4200	12	200
74	74000	21	352
105	105000	30	500
137	136500	39	650
168	168000	48	800
210	210000	60	1000

I. Collecting tank: Reception of sewage and grey water.

II. Aerobic Tank: Where the biological process takes place

III. Membranes Tank: Physical barrier for all suspended solids and bacteria.

